



Government of India
Ministry of Earth Sciences
India Meteorological Department



Press Release

Date: 18th March, 2025

Time of Issue: 1355 hours IST

Subject: i. Thunderstorm, lightning, gusty winds & hailstorms likely over East central and adjoining Eastern parts of India including over Gangetic West Bengal, Jharkhand, Bihar and Odisha during 20th-23rd March with peak activity on 20th & 22nd March.
ii. Current spell of Heat wave conditions likely to abate from interiors Odisha from 19th March.

i. Realised weather during past 24 hours till 0830 hours IST of today, the 18th March 2025 (Annexure I):

- ❖ **Hailstorms reported** at isolated locations over Uttarakhand, Assam, Jharkhand.
- ❖ **Gusty wind reported** at isolated locations over Jharkhand, Meghalaya, Arunachal Pradesh, Nagaland, Gangetic West Bengal.
- ❖ **Heat wave to Severe heat wave conditions** prevailed at some places over north interior Odisha.
- ❖ For more details of realised weather, kindly refer [Annexure I](#)

Temperature:

- ❖ For temperature observations during past 24 hours till 0830 hours IST of today are provided in [Annexure II](#)

ii. Weather Systems, Forecast and Warnings (Annexure III & IV):

- ❖ **Due to wind confluence from the Bay of Bengal over Central and East India** in lower tropospheric levels:
 - ✓ **Isolated to Scattered** light/moderate rainfall accompanied with **thunderstorm, lightning & gusty winds (speed 30-50 kmph)** likely over Sub-Himalayan West Bengal & Sikkim during 20th-22nd and over Bihar on 21st & 22nd; East Madhya Pradesh and Chhattisgarh during 19th-22nd; West Madhya Pradesh on 20th & 21st and Vidarbha on 21st & 22nd March.
 - ✓ **Scattered to Fairly widespread** light/moderate rainfall accompanied with thunderstorm, lightning & gusty winds (speed 40-60 kmph) likely over Gangetic West Bengal, Jharkhand and Odisha during 20th-22nd March.
 - ✓ **Isolated hailstorms also likely over Jharkhand on 20th; Gangetic West Bengal on 20th & 21st; Bihar on 21st & 22nd; Odisha during 20th -22nd March.**
- ❖ A **Cyclonic Circulation** lies over northeast Assam and neighbourhood in lower tropospheric levels. Under its influence;
 - ✓ **Scattered to Fairly widespread light/moderate rainfall/snowfall** accompanied with **thunderstorm, lightning & gusty winds (speed 30-40 kmph)** likely over Arunachal Pradesh during next 5 days.

- ✓ **Isolated to Scattered** light/moderate rainfall accompanied with **thunderstorm, lightning & gusty winds (speed 30-40 kmph)** likely over Assam & Meghalaya and Nagaland, Manipur, Mizoram & Tripura during next 5 days.

Temperature Forecast:

Forecast of temperature:

Maximum temperature:

- ❖ Gradual rise in maximum temperatures by about 2-3°C likely over Northwest India during next 3 days and no significant change thereafter.
- ❖ No significant change in maximum temperatures likely over Central India and Interior Maharashtra during next 24 hours and fall by 2-4°C during subsequent 2-5 days.
- ❖ No significant change in maximum temperatures likely over East India during next 3 days and fall by 3-5°C during subsequent 2 days.
- ❖ No significant change in maximum temperatures likely over Gujarat State during next 4 days and rise by 2-3°C thereafter.

Heat wave and Hot & Humid weather warning:

- ❖ **Heat wave conditions** likely to continue at isolated pockets over interior Odisha on 18th March.
- ❖ **Hot & humid conditions** very likely to prevail in isolated pockets over coastal areas of Gujarat State during next 2 days and over interior Karnataka during 18th-20th March.

iv. Weather conditions and forecast over Delhi/NCR during 18th March to 21st March, 2025 (Annexure V)

For more details, kindly refer National Weather Bulletin:

https://mausam.imd.gov.in/responsive/all_india_forecast_bulletin.php

For District wise warnings refer: <https://mausam.imd.gov.in/responsive/districtWiseWarningGIS.php>

Significant weather reported during past 24 hours till 0830 hours IST of today:

- ❖ Light to moderate **Rainfall/Snowfall** occurred at many places Uttarakhand, Arunachal Pradesh; at isolated places over Himachal Pradesh.
- ❖ **Light to moderate rainfall** at many places over Kerala & Mahe, Lakshadweep; at a few places over Sub-Himalayan West Bengal & Sikkim; at isolated places over East Uttar Pradesh, Gangetic West Bengal, Bihar, Jharkhand, Odisha, Assam & Meghalaya, Nagaland, Manipur, Mizoram & Tripura, Tamilnadu Puducherry & Karaikal, South Interior Karnataka.
- ❖ **Thunderstorm reported** at isolated locations over Tamilnadu Puducherry & Karaikal, Kerala & Mahe, Lakshadweep, East Uttar Pradesh, Uttarakhand, Himachal Pradesh, Arunachal Pradesh, Assam & Meghalaya.

Rainfall recorded (in cm):

- ❖ **Tamilnadu:** Chamraj Estate (dist The Nilgiris) 5, Cincona (dist Coimbatore), Taluk Office Pandalur (dist The Nilgiris) 4 each,
- ❖ **Kerala & Mahe:** Nilambur (dist Malappuram) 5, Mangalam Dam Aws (dist Palakkad) 5, Angadipuram (dist Malappuram) 4, Vellathooval Aws (dist Idukki) 4, Munnar Kseb (dist Idukki) 4,
- ❖ **Arunachal Pradesh:** Tuting_ Aws (dist Upper Siang) 5, Tenali AWS (dist Upper Siang) 5, Kibithoo Circle AWS (dist Anjaw) 4,
- ❖ **Nagaland, Manipur, Mizoram & Tripura:** Tamenglong (dist Tamenglong) 3, Kadamtala CWC (dist North Tripura) 2.

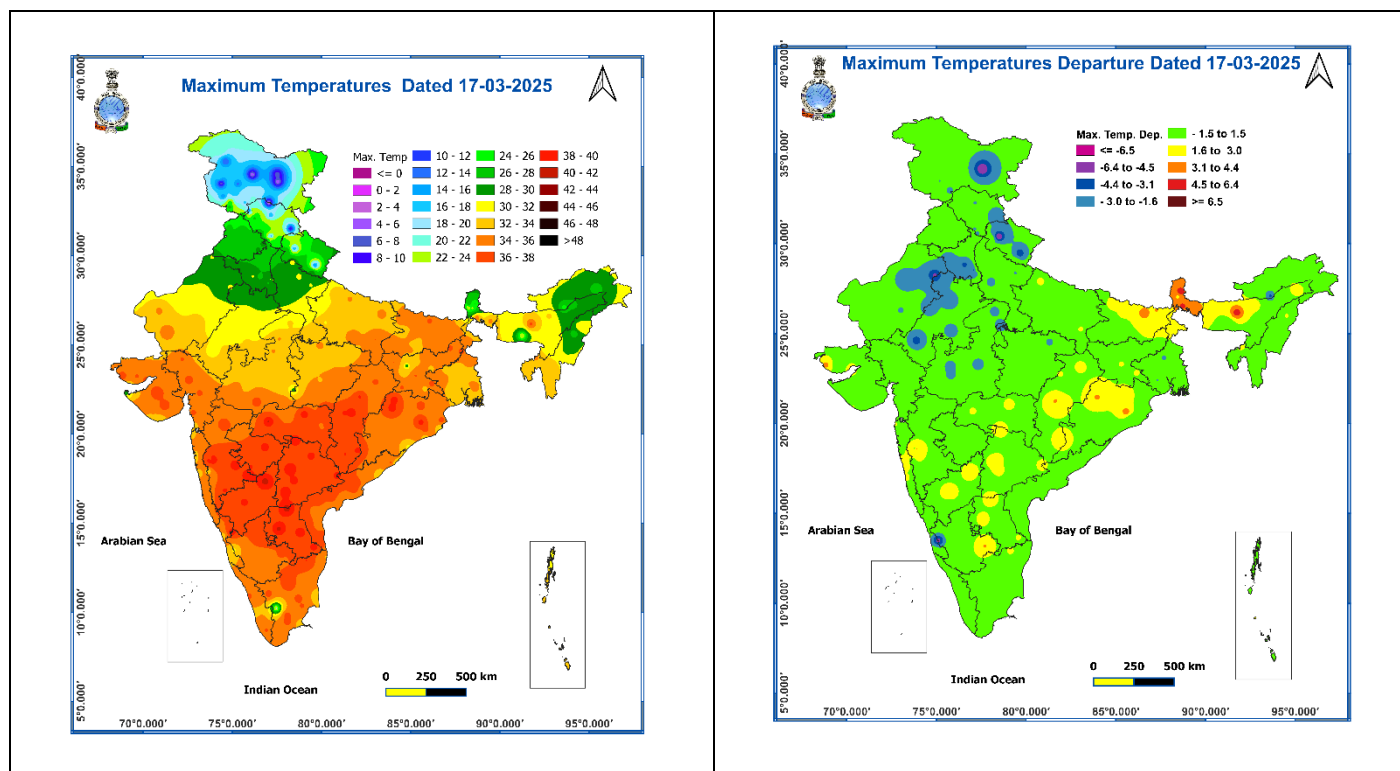
Hailstorm reported:

- ❖ **Assam:** Tinsukia
- ❖ **Jharkhand:** East Singbhum
- ❖ **Uttarakhand:** Lohaghat

- ❖ **Maximum temperatures** were **markedly above normal (5.1°C or more)** at isolated places over Sub-Himalayan West Bengal & Sikkim; **appreciably above normal (3.1°C to 5.0°C)** at isolated places over Bihar, Odisha; **above normal (1.6°C to 3.0°C)** at a few places Assam & Meghalaya, Chhattisgarh, Telangana, Vidarbha, Konkan & Goa, North Interior Karnataka, Rayalaseema; at isolated places over Saurashtra & Kutch, East Uttar Pradesh, Jharkhand, Nagaland, Manipur, Mizoram & Tripura, Madhya Maharashtra. These were **markedly below normal (-5.1°C or less)** at isolated places over Jammu-Kashmir-Ladakh Gilgit-Baltistan-Muzaffarabad, Uttarakhand; **below normal (-3.0°C to -1.6°C)** at many places over Rajasthan; at isolated places over Himachal Pradesh, Haryana-Chandigarh-Delhi, West Uttar Pradesh, Madhya Pradesh and near normal over rest parts of the country.
- ❖ Yesterday, the 17th March, the Maximum temperatures have shown **falling tendency by 1-3 °C** at most places over Uttar Pradesh, Central India, Madhya Pradesh, Gangetic West Bengal and North interior Karnataka; **rising tendency by 2-5°C** at most places over Jammu Division, West Rajasthan, northern parts of Bihar, Sub-Himalayan West Bengal & Sikkim and Assam & Meghalaya,
- ❖ Yesterday, the 17th March, the Maximum temperatures were in the range of **40-42°C** (with the **highest Tmax 43.5 Deg C at Boudh in interior Odisha**) at isolated places over Interior Odisha, Coastal Andhra Pradesh & Yanam, Rayalaseema, Marathawada; **35-40°C** over most parts of West and Central India, Bihar, West Bengal & Sikkim, Chhattisgarh and south peninsular India. (Fig.1)

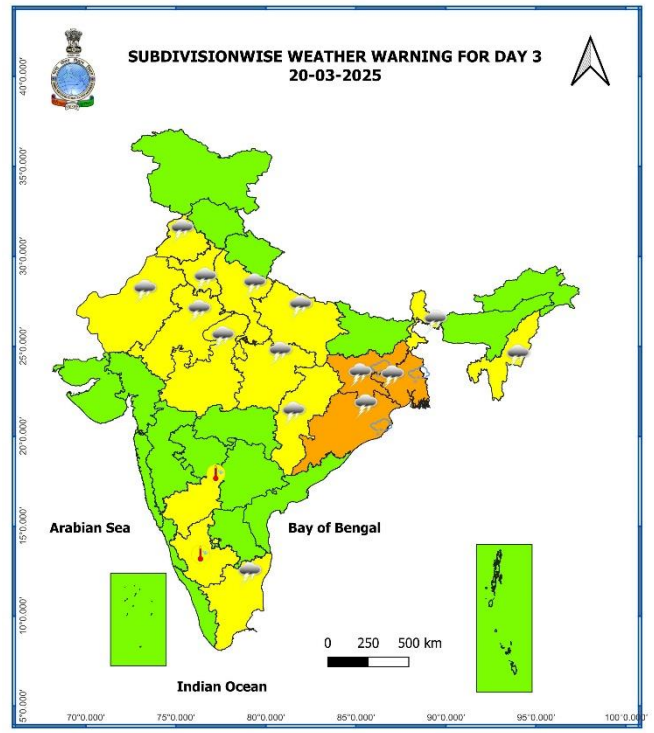
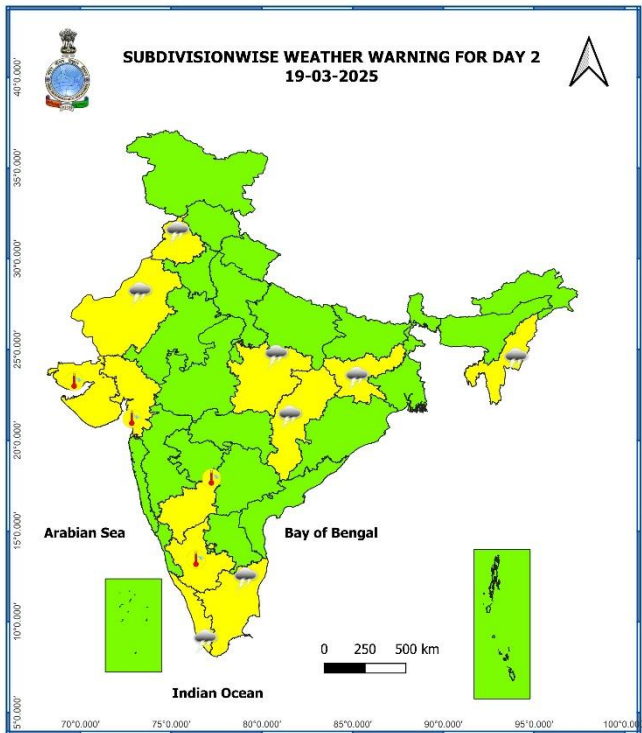
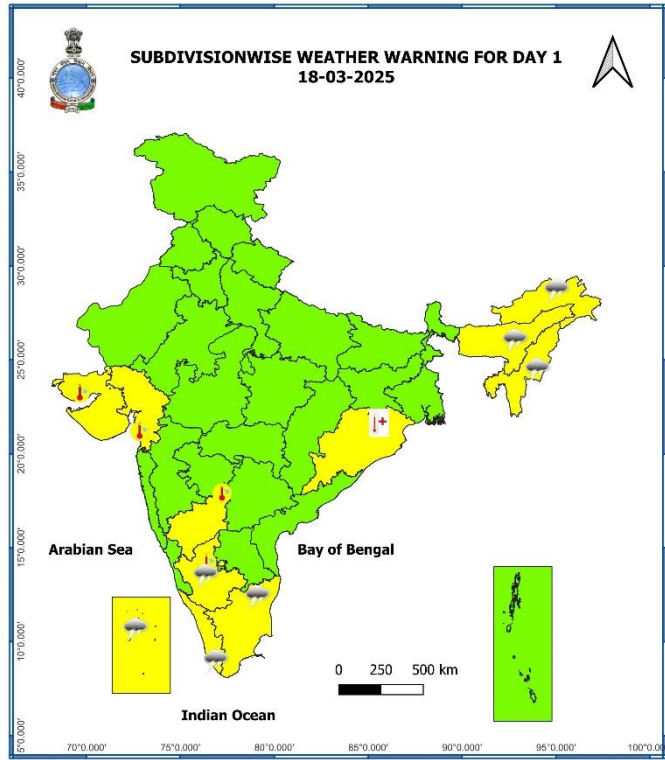
Fig. 1: Maximum Temperatures

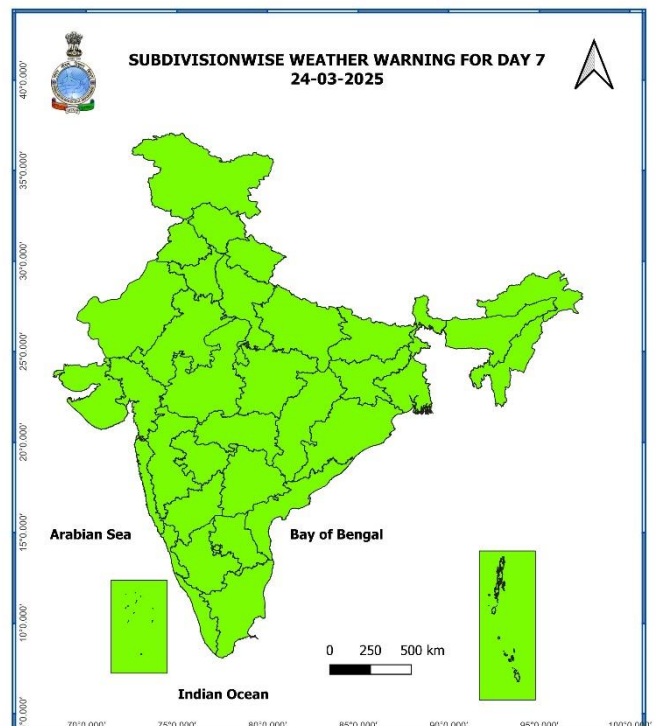
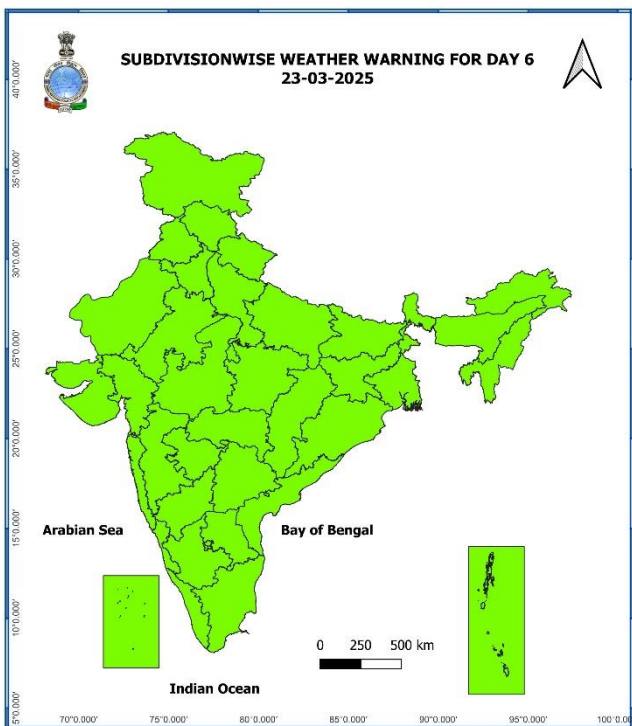
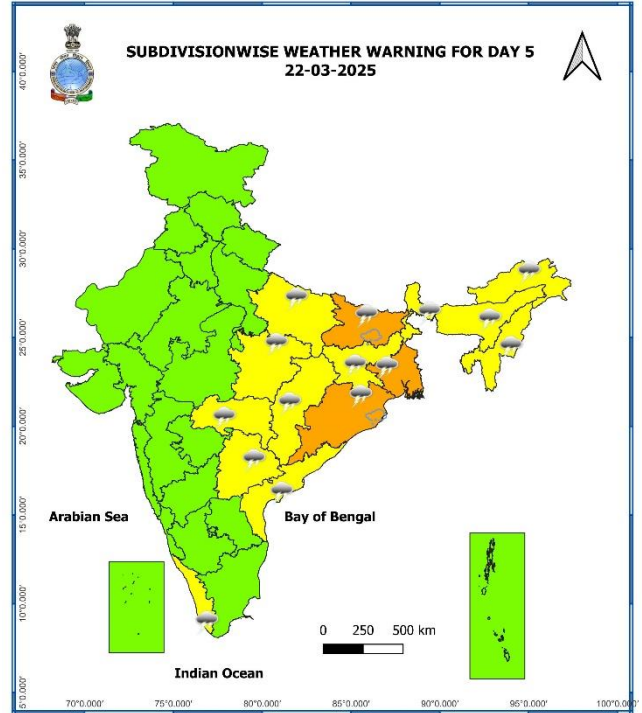
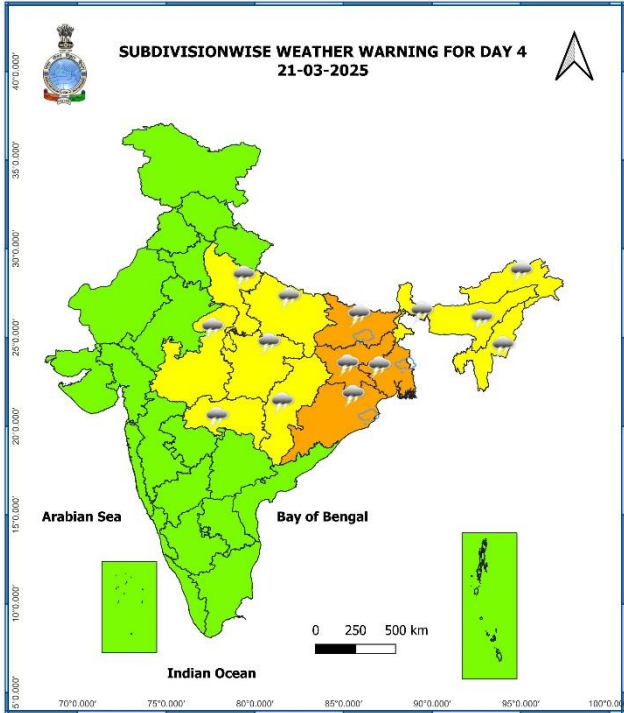
Fig. 2: Departure of Maximum Temperatures



7 Days Rainfall Forecast								
S. No.	Subdivision	18-Mar	19-Mar	20-Mar	21-Mar	22-Mar	23-Mar	24-Mar
		Day 1	Day 2	Day 3	Day 4	Day 5	Day 6	Day 7
1	ANDAMAN & NICOBAR ISLANDS	SCT	ISOL	SCT	SCT	FWS	FWS	SCT
2	ARUNACHAL PRADESH	ISOL	FWS	FWS	FWS	SCT	SCT	SCT
3	ASSAM & MEGHALAYA	DRY	SCT	FWS	FWS	SCT	SCT	SCT
4	NAGALAND, MANIPUR, MIZORAM & TRIPURA	DRY	ISOL	SCT	FWS	SCT	SCT	ISOL
5	SUB-HIMALAYAN WEST BENGAL & SIKKIM	ISOL	ISOL	SCT	ISOL	ISOL	ISOL	ISOL
6	GANGETIC WEST BENGAL	DRY	DRY	DRY	DRY	DRY	DRY	DRY
7	ODISHA	DRY	DRY	DRY	DRY	DRY	DRY	DRY
8	JHARKHAND	DRY	DRY	DRY	DRY	DRY	DRY	DRY
9	BIHAR	DRY	DRY	DRY	DRY	DRY	DRY	ISOL
10	EAST UTTAR PRADESH	DRY	DRY	DRY	DRY	DRY	DRY	DRY
11	WEST UTTAR PRADESH	DRY	DRY	DRY	ISOL	ISOL	ISOL	DRY
12	UTTARAKHAND	ISOL	ISOL	ISOL	SCT	SCT	SCT	SCT
13	HARYANA CHANDIGARH & DELHI	DRY	DRY	DRY	ISOL	ISOL	ISOL	DRY
14	PUNJAB	ISOL	DRY	ISOL	ISOL	ISOL	ISOL	DRY
15	HIMACHAL PRADESH	SCT	ISOL	SCT	FWS	FWS	FWS	FWS
16	JAMMU & KASHMIR AND LADAKH	WS	SCT	FWS	WS	WS	WS	FWS
17	WEST RAJASTHAN	DRY	DRY	DRY	ISOL	ISOL	ISOL	DRY
18	EAST RAJASTHAN	DRY	DRY	DRY	DRY	ISOL	ISOL	DRY
19	WEST MADHYA PRADESH	DRY	DRY	DRY	DRY	DRY	DRY	DRY
20	EAST MADHYA PRADESH	DRY	DRY	DRY	DRY	DRY	DRY	DRY
21	GUJARAT REGION	DRY	DRY	DRY	DRY	DRY	DRY	DRY
22	SAURASHTRA & KUTCH	DRY	DRY	DRY	DRY	DRY	DRY	DRY
23	KONKAN & GOA	DRY	DRY	DRY	DRY	DRY	DRY	DRY
24	MADHYA MAHARASHTRA	DRY	DRY	DRY	DRY	DRY	DRY	DRY
25	MARATHAWADA	DRY	DRY	DRY	DRY	DRY	DRY	DRY
26	VIDARBHA	DRY	DRY	DRY	DRY	DRY	DRY	DRY
27	CHHATTISGARH	DRY	DRY	DRY	DRY	DRY	DRY	DRY
28	COASTAL ANDHRA PRADESH & YANAM	DRY	DRY	DRY	DRY	DRY	DRY	DRY
29	TELANGANA	DRY	DRY	DRY	DRY	DRY	DRY	DRY
30	RAYALASEEMA	DRY	ISOL	ISOL	DRY	DRY	DRY	DRY
31	TAMILNADU PUDUCHERRY & KARAIKAL	ISOL	FWS	SCT	ISOL	ISOL	ISOL	ISOL
32	COASTAL KARNATAKA	DRY	DRY	DRY	DRY	DRY	DRY	DRY
33	NORTH INTERIOR KARNATAKA	DRY	DRY	DRY	DRY	DRY	DRY	DRY
34	SOUTH INTERIOR KARNATAKA	DRY	ISOL	ISOL	DRY	DRY	DRY	DRY
35	KERALA & MAHE	ISOL	FWS	SCT	ISOL	ISOL	ISOL	SCT
36	LAKSHADWEEP	DRY	WS	FWS	SCT	DRY	DRY	SCT

- As the lead period increases forecast accuracy decreases.





- Action may be taken based on **ORANGE AND RED COLOUR** warnings.
- Vulnerable regions likely urban and hilly areas action may be initiated for heavy rainfall warning.
- As the lead period increases forecast accuracy decreases.

Detailed district wise Multi Hazard weather warning for next five days available at <https://mausam.imd.gov.in/responsive/districtWiseWarningGIS.php>

Weather forecast over Delhi/NCR during 18th Mar. to 21th Mar. 2025**Past Weather:**

There has been a fall in minimum and maximum temperatures upto 02°C over Delhi/NCR during the past 24 hours. The maximum and minimum temperatures over Delhi are in the range of 28 to 30°C and 13 to 16°C respectively. The minimum and maximum temperatures were below normal upto 02°C at most places. Mainly clear sky conditions with predominant surface wind from the northwest direction with wind speeds less than 16 to 18 kmph prevailed during the past 24 hours. Mainly clear sky conditions with wind speed less than 10 kmph from the southwest direction prevailed over the region in the forenoon today.

Weather Forecast:

18.03.2025: Mainly clear sky. Strong surface winds (speed 20-30kmph). The maximum temperature over Delhi is likely to be in the range of 29 to 31°C. The predominant surface wind will likely be from the northwest direction with a wind speed of less than 20 kmph till evening. It would decrease thereafter becoming less than 10 kmph from the northwest direction during the night.

19.03.2025: Partly cloudy sky. Mist likely in the morning. Strong surface winds (speed 20-30kmph). The maximum and minimum temperatures over Delhi are likely to be in the range of 31 to 33°C and 15 to 17°C respectively. The predominant surface wind will likely be from the north-northwest direction with a wind speed of 08-10 kmph during morning hours. The wind speed will gradually increase thereafter becoming, 16-18 kmph from the northwest direction during the afternoon. It will decrease becoming less than 10 kmph from the north direction during evening and night.

20.03.2025: Partly cloudy sky. Mist likely in the morning. Strong surface winds (speed 20-30kmph). The maximum and minimum temperatures over Delhi are likely to be in the range of 33 to 35°C and 17 to 19°C respectively. The predominant surface wind will likely be from the northeast direction with a wind speed of 08-10 kmph during morning hours. The wind speed will gradually increase becoming 16-18 kmph from the northwest direction in the afternoon. It will decrease becoming less than 10 kmph from the north direction during evening and night.

21.03.2025: Mainly clear sky. Mist likely in the morning. The maximum and minimum temperatures over Delhi are likely to be in the range of 32 to 34°C and 17 to 19°C respectively. The predominant surface wind will likely be from the north direction with a wind speed of 06-08 kmph during morning hours. The wind speed will gradually increase becoming 10-12 kmph from the northwest direction in the afternoon. It will decrease becoming less than 10 kmph from the north direction during evening and night.

Impact expected and action suggested due to thunderstorm accompanied with lightning/gusty winds & hailstorm over Northeast India during next 5 days and over east & central India during 20th-22nd March 2025

❖ **Impact expected:**

- ❖ Strong wind may damage plantation, horticulture and standing crops.
- ❖ Partial damage to vulnerable structures due to strong winds.
- ❖ Minor damage to kutchha houses/walls and huts.
- ❖ Loose objects may fly.

❖ **Action suggested:**

- ❖ Stay indoors, close windows & doors and avoid travel if possible.
- ❖ Take safe shelters; do not take shelter under trees.
- ❖ Do not lie on concrete floors and do not lean against concrete walls.
- ❖ Unplug electrical/ electronic appliances.
- ❖ Immediately get out of water bodies.
- ❖ Keep away from all the objects that conduct electricity.

Agromet advisories for likely impact of Heavy Rainfall / Hailstorm / Heat Wave

- In **Odisha**, apply light and frequent irrigation to the standing crops, vegetables and orchards in the evening to protect them from adverse impacts of high temperatures.
- To avoid the adverse impact of likely hailstorm, harvest the matured standing crops, vegetables and fruits and shift the harvested produce in safer places or cover the produce with tarpaulin sheets in the fields.
- Provide mechanical support to horticultural crops and staking to vegetables to avoid lodging.

Livestock

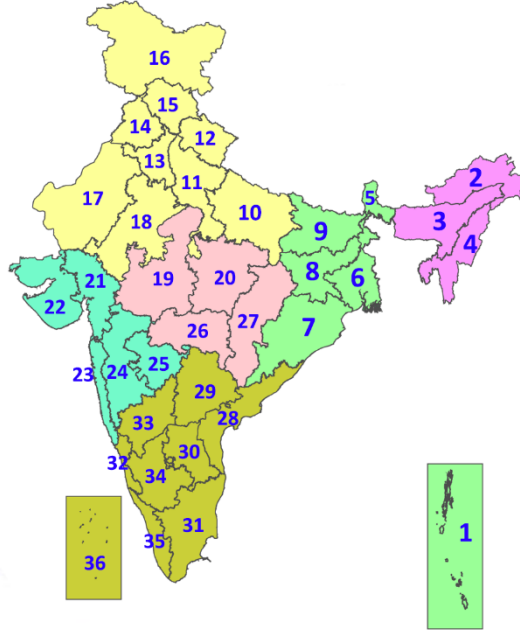
- Store feed and fodder in a safe place to prevent spoilage.
- To reduce the effect of heat wave/high temperature, cover the roof of poultry sheds with grass. Also provide clean, hygienic and plenty of drinking water to animals.

Legends & abbreviations:

- ❖ **Heavy Rain:**64.5-115.5mm; **Very Heavy Rain:**115.6-204.4mm; **Extremely Heavy Rain:** >204.4mm.
- ❖ **Obsy:** Observatory; **AWS:** Automatic Weather Station; **ARG:** Automatic Rain Gauge; **dist:** District; **NH:** National Highway; **KVK:** Krishi Vigyan Kendra; **DVC:** Damodar Valley Corporation; **PTO:** Part Time Office, **Aero:** Aerodrome, **IAF:** Indian Air Force.
- ❖ **Region wise classification of meteorological Sub-Divisions:**
 - **Northwest India:** Western Himalayan Region (Jammu-Kashmir-Ladakh-Gilgit-Baltistan-Muzaffarabad, Himachal Pradesh and Uttarakhand); Punjab, Haryana-Chandigarh-Delhi; West Uttar Pradesh, East Uttar Pradesh, West Rajasthan and East Rajasthan.
 - **Central India:** West Madhya Pradesh, East Madhya Pradesh, Vidarbha and Chhattisgarh.
 - **East India:** Bihar, Jharkhand, Sub-Himalayan West Bengal & Sikkim; Gangetic West Bengal, Odisha and Andaman & Nicobar Islands.
 - **Northeast India:** Arunachal Pradesh, Assam & Meghalaya and Nagaland, Manipur, Mizoram & Tripura.
 - **West India:** Gujarat Region, Saurashtra & Kutch, Konkan & Goa, Madhya Maharashtra and Marathawada.
 - **South India:** Coastal Andhra Pradesh & Yanam, Telangana, Rayalaseema, Coastal Karnataka, North Interior Karnataka, South Interior Karnataka, Kerala & Mahe, Tamil Nadu, Puducherry & Karaikal and Lakshadweep.

LEGENDS

1. अंडमान और निकोबार द्वीपसमूह
2. अरुणाचल प्रदेश
3. असम और मेघालय
4. नागालैंड, मणिपुर, मिजोरम और त्रिपुरा
5. उप-हिमालयी पश्चिम बंगाल और सिक्किम
6. गंगीय पश्चिम बंगाल
7. ओडिशा
8. झारखंड
9. बिहार
10. पूर्वी उत्तर प्रदेश
11. पश्चिम उत्तर प्रदेश
12. उत्तराखंड
13. हरियाणा, चंडीगढ़ और दिल्ली
14. पंजाब
15. हिमाचल प्रदेश
16. जम्मू और कश्मीर और लद्दाख
17. पश्चिम राजस्थान
18. पूर्वी राजस्थान
19. पश्चिम मध्य प्रदेश
20. पूर्वी मध्य प्रदेश
21. गुजरात
22. सौराष्ट्र
23. कोंकण और गोवा
24. मध्य महाराष्ट्र
25. मराठवाड़ा
26. विदर्भ
27. छत्तीसगढ़
28. तटीय आंध्र प्रदेश और यनम
29. तेलंगाना
30. रायलसीमा
31. तमिलनाडु, पुडुचेरी और कराईकल
32. तटीय कर्नाटक
33. आंतरिक उत्तरी कर्नाटक
34. आंतरिक दक्षिणी कर्नाटक
35. केरल और माहे
36. लक्षद्वीप



1. Andaman & Nicobar Islands
2. Arunachal Pradesh
3. Assam & Meghalaya
4. Nagaland, Manipur, Mizoram & Tripura
5. Sub-Himalayan West Bengal & Sikkim
6. Gangetic West Bengal
7. Odisha
8. Jharkhand
9. Bihar
10. East Uttar Pradesh
11. West Uttar Pradesh
12. Uttarakhand
13. Haryana, Chandigarh & Delhi
14. Punjab
15. Himachal Pradesh
16. Jammu & Kashmir and Ladakh
17. West Rajasthan
18. East Rajasthan
19. West Madhya Pradesh
20. East Madhya Pradesh
21. Gujarat
22. Saurashtra
23. Konkan & Goa
24. Madhya Maharashtra
25. Marathwada
26. Vidarbha
27. Chhattisgarh
28. Coastal Andhra Pradesh & Yanam
29. Telangana
30. Rayalaseema
31. Tamilnadu, Puducherry & Karaikal
32. Coastal Karnataka
33. North Interior Karnataka
34. South Interior Karnataka
35. Kerala & Mahe
36. Lakshadweep

SPATIAL DISTRIBUTION (% of Stations reporting)

% Stations	Category	% Stations	Category
76-100	Widespread (WS/Most Places)	26-50	Scattered (SCT/A Few Places)
51-75	Fairly Widespread (FWS/Many Places)	1-25	Isolated (ISOL)



Fog



Heavy Snow



Cold Wave



Heavy Rain



Dust Storm



Cold Day



Very Heavy Rain



Heat Wave



Ground Frost



Extremely Heavy Rain



Warm Night



Thunder & Lightning



Hot Day



Hailstorm



Hot & Humid



Dust Raising Winds



Strong Surface Winds

COLOUR CODED WARNING

No Warning (No Action)

Watch (Be Aware)

Alert (Be Prepared To Take Action)

Warning (Take Action)

Probabilistic Forecast

Terms	Probability of Occurrence (%)
Unlikely	< 25
Likely	25 - 50
Very Likely	50 - 75
Most Likely	> 75

* Red colour warning does not mean "Red Alert", Red colour warning means "Take Action".
Forecast and Warning for any day is valid from 0830 hours IST of day till 0830 hours IST of next day.
For more details, kindly visit <https://mausam.imd.gov.in> or contact: 011-2434-4599
(Service to the Nation since 1875)

DEFINITION/CRITERIA

Rain/ Snow *

Heavy: 64.5 to 115.5 mm/cm *
Very Heavy: 115.6 to 204.4 mm/cm *
Extremely Heavy: > 204.4 mm/cm *

Heat Wave

When maximum temperature of a station reaches $\geq 40^\circ\text{C}$ for plains and $\geq 30^\circ\text{C}$ for hilly regions
(a) Based on Departure from normal

Heat Wave: Maximum Temperature Departure from normal 4.5°C to 6.4°C .
Severe Heat Wave: Maximum Temperature Departure from normal $\geq 6.5^\circ\text{C}$

(b). Based on Actual maximum temperature

Heat Wave: When actual maximum temperature $\geq 45^\circ\text{C}$.
Severe Heat Wave: When actual maximum temperature $\geq 47^\circ\text{C}$

(c). Criteria for heat wave for coastal stations

When maximum temperature departure is $> 4.5^\circ\text{C}$ from normal. Heat Wave may be described provided maximum temperature $\geq 37^\circ\text{C}$

Warm Night

When maximum temperature remains 40°C

Warm Night: When minimum temperature departure 4.5°C to 6.4°C .
Severe Warm Night: When minimum temperature departure $> 6.4^\circ\text{C}$.

Cold Wave

When minimum temperature of a station $\leq 10^\circ\text{C}$ for plains and $\leq 0^\circ\text{C}$ for hilly regions.
(a). Based on departure

Cold Wave: Minimum Temperature Departure from normal -4.5°C to -6.4°C .
Severe Cold Wave: Minimum Temperature Departure from normal $\leq -6.5^\circ\text{C}$

(b) Based on actual Minimum Temperature (for Plains only)

Cold Wave : When Minimum Temperature is $\leq 4.0^\circ\text{C}$
Severe Cold Wave: When Minimum Temperature is $\leq 2.0^\circ\text{C}$

(c) For Coastal Stations

When Minimum Temperature departure is $\leq -4.5^\circ\text{C}$ & actual Minimum Temperature is $\leq 15^\circ\text{C}$

Cold Day

When minimum temperature of a station $\leq 10^\circ\text{C}$ for plains and $\leq 0^\circ\text{C}$ for hilly regions
Based on departure

Cold Day: Maximum Temperature Departure from normal -4.5°C to -6.4°C .
Severe Cold Day: Maximum Temperature Departure from normal $\leq -6.5^\circ\text{C}$

Fog

Phenomenon of small droplets suspended in air and the horizontal visibility $< 1\text{km}$

Moderate Fog: When the visibility between 500-200 metres
Dense Fog: when the visibility between 50- 200 metres
Very Dense Fog: when the visibility < 50 metres

Thunderstorm

Sudden electrical discharges manifested by a flash of light (Lightning) and a sharp rumbling sound (thunder)

Dust/Sand Storm

An ensemble of particles of dust or sand energetically lifted to great heights by a strong and turbulent wind.

Frost

Ice deposits on ground

Air temperature $\leq 4^\circ\text{C}$ (over Plains)

Squall

A strong wind that rises suddenly, lasts for atleast 1 minute.

Moderate: Wind speed 52-61 kmph
Severe: Wind speed 62-87 kmph
Very Severe: Wind speed > 87 kmph

Sea State

Effect of various waves in the sea over specific area

Rough to very rough: Wind speed 41-62 kmph (22-33 knots) & Wave height 2.5-6 metre
High to very high: Wind speed 63-117 kmph (34-63 knots) & Wave height 6-14 metre
Phenomenal: Wind speed > 117 kmph (> 63 knots) & Wave height > 14 metre

Cyclone

Cyclonic Storm: Wind speed 62-87 kmph (34-47 knots)
Severe Cyclonic Storm: Wind speed 88-117 kmph (48-63 knots)
Very Severe Cyclonic Storm: Wind speed 118-165 kmph (64 - 89 knots)
Extremely Severe Cyclonic Storm: Wind speed 166-220 kmph (90 -119 knots)
Super Cyclone Storm: Wind speed > 220 kmph (> 119 knots)

* Red colour warning does not mean "Red Alert", Red colour warning means "Take Action".
Forecast and Warning for any day is valid from 0830 hours IST of day till 0830 hours IST of next day.
For more details, kindly visit <https://mausam.imd.gov.in> or contact: 011-2434-4599
(Service to the Nation since 1875)

Hot and Humid: When maximum temperatures remain 3°C above normal along with the above normal relative humidity.